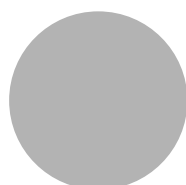
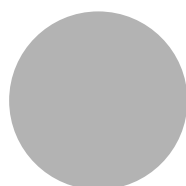
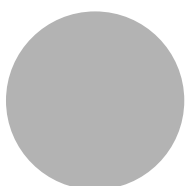
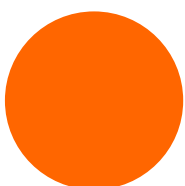
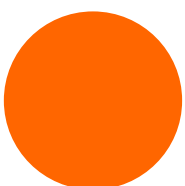
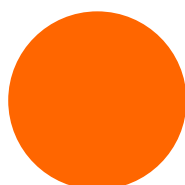
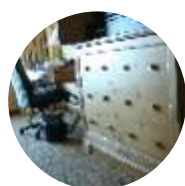


# evo | The Wiring Solution for Hotel Construction



## Fully Engineered Cabling Solution

Apex Wiring Solutions have eVolved their existing range of products to include fully populated **skirting and dado trunking** assemblies for environments where surface mounted electrical wiring and accessories are the preferred solution. Supplement this with the **3 Phase Corridor Flat Buzzwire Tapoff** and a quick, safe, pre-engineered and flexible series of components, ideal for repeatable room construction such as hotels, is achieved.



Designed to house a considerable number of cables and assure contiguous segregation between power and data circuits throughout the length of the trunking (including corners, couplings, junctions and enclosures), complex installations can be made with complete peace of mind.

### In Brief

- A **32 Amp Solution** providing the highest rated connector of its type in the market place.
- **Factory tested assemblies** reduce snagging and onsite testing.
- Eradicate cabling errors using quick **pluggable, coded & lockable connections**.
- Peace of mind from **Quality Assured** products and services.
- **Environmentally friendly** ordering only what is required for the project, with **zero waste**
- **Rapid installation** allowing accessories to be fitted, fully working in one visit
- Flexible supply with individual project **kitting**
- With no onsite cable preparation a **safe, risk free installation** is achieved by reducing the need for blades and cutters.
- Numerous **cost benefits** including the removal of noggins, reduced onsite labour and improved programme.
- Customer specified, **pre-fabricated**, tested **trunking** assemblies



Using the latest CAD and draughting technology for design as well established project management tools **Apex Wiring Solutions** are able to supply the complete package, working in partnership with the customer to develop the ideal project solution, delivered right first time.

---

*“.. quality, service  
and cost ..”*

---



## Accessory Range

Fast fix "Swinglock" technology  
 Eliminates wall noggins  
 Factory assembled & tested  
 Suitable for any depth of wall cavity  
 Available with all standard wiring accessories  
 Available in White or Chrome as standard  
 Other finishes on request  
 Colour coded to aid installation  
 Mechanically coded to stop mis-mating



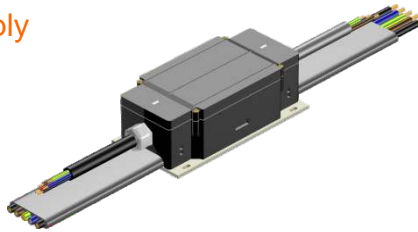
## Dado & Skirting Trunking

Fully populated customer specified sections  
 Factory assembled & tested  
 Intergrated , interlocking moulded assembly



## 3 Phase Supply

40Amp Tapoff  
 5 core 16mm<sup>2</sup> Flat Busbar Cable  
 Factory assembled & tested



## Consumer Unit

Factory assembled & tested  
 Manufactured to customer specification  
 Fully pluggable outgoing ways  
 Concealed external fixing  
 Vanity panel to cover connections



## Extender Lead

19mm maximum diameter  
 Available in 1.5mm<sup>2</sup>, 2.5mm<sup>2</sup> and 4mm<sup>2</sup> cable  
 Factory assembled & tested  
 3, 4, 5 and 6 wire configurations  
 Colour coded to aid installation  
 Available in standard 1m length increments  
 In Low Smoke Zero Halogen as standard



## Branch Connector

Factory moulded unit  
 Allows splitting of circuit  
 3 and 4 Wire Configurations  
 Colour coded to aid installation  
 Mechanically coded to stop mis-mating

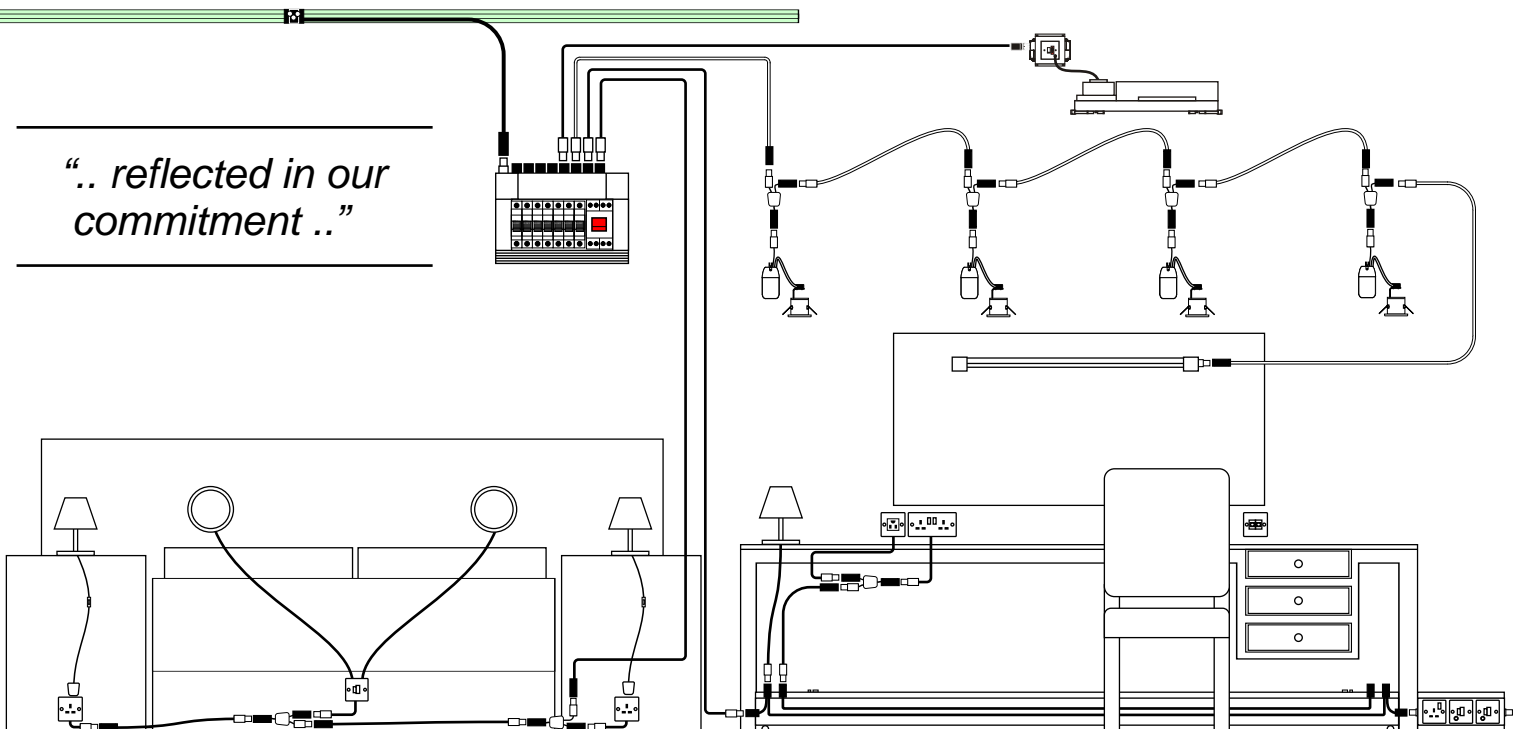


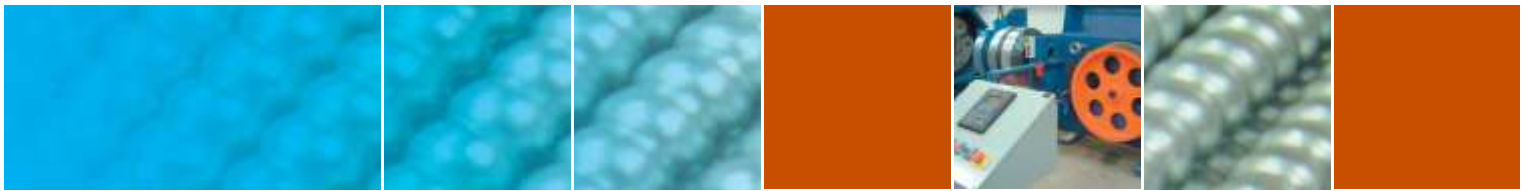
## Pre-wired Luminaires

Factory assembled & tested  
 Shipped ex-stock for standard range  
 Downlighters available in White, Chrome, IP44, IP65, Low voltage or 240V  
 Colour coded to aid installation  
 Mechanically coded to stop mis-mating



*".. reflected in our commitment .."*





For further information please contact our sales department.

All reasonable care has been taken to ensure that the information contained in this publication, and any associated inserts, is accurate as at the date of printing.  
 Apex Cables pursues a policy of continual development of its products and services and as such information is liable to variation subsequent to the date of printing in the statements referred to in this publication.  
 The images and data contained in this document are for guidance only and do not form any part of the contract."

Iss. 002-07/04

Apex Wiring Solutions  
 St. John's Road  
 Meadowfield Industrial Estate  
 Durham City  
 County Durham  
 DH7 8RJ

Tel: 0191 378 7900  
 Fax : 0191 378 7909

[www.apexwiringsolutions.co.uk](http://www.apexwiringsolutions.co.uk)